



Private Rehabilitation Clinic

# JF Rehabilitation Clinic

*For those who desire a more functional recovery*

## State-of-the-art Rehabilitation Therapy

## Collaboration with Juntendo University

### Our features

- Rehabilitation Therapy prescription by board certificated doctor of Rehabilitation Medicine
- Rehabilitation Therapy based on scientific evidence
- Cutting-edge Rehabilitation Therapy Equipment
- Individualized Rehabilitation Therapy
- Rehabilitation rooms with privacy

### Cutting-edge Rehabilitation Therapy



Partial Weight  
Bearing Treadmill



StrengthErgo



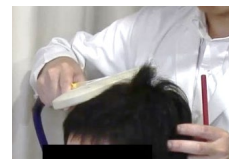
Neuro-feedback



Robotics



Magnetic stimulation



# How to apply for Rehabilitation Therapy

- 1 Bring the letter of referral from your doctor.
- 2 Visit the **Department of Rehabilitation Medicine, Juntendo University Hospital.**  
Doctor of Rehabilitation Medicine assess your physical function and writes the letter of referral to JF Rehabilitation clinic.
- 3 Make an appointment for first consultation by yourself  
Please call **【+81 03 - 6801 - 5326】**



## Fee

- One session (1 hr) of therapy JY 30,000
- 10sessions course JY 270,000

## Map & Traffic

- JR Line Ochanomizu station  
Ochanomizu Bridge Exit 10min walk
- Tokyo Metro  
Ochanomizu 10min walk  
Shin-Ochanomizu 15min walk



Entrance of JFRC

## Open time

診療時間	Mon	Tue	Wed	Thu	Fri
10:00~ 13:00	○	/	○	/	○
14:00~ 18:00	○	/	○	/	○



Yuasa Building 3<sup>rd</sup> Floor, 2-13-10 Hongo, Bunkyo, Tokyo 113-0033, Japan

HP : <https://jf-rehabilitation.jp/> E-mail : [info@jf-rehabilitation.jp](mailto:info@jf-rehabilitation.jp)

TEL : 03 - 6801 - 5326 FAX : 03 - 6801 - 5327